



REGISTERED OFFICE
 St. Linus University
 C/O CCP, Inc.
 P.O. BOX 2342, Roseau,
 DOMINICA
 Fax: (767) 1731/1608
 Tel.: (767) 4481708

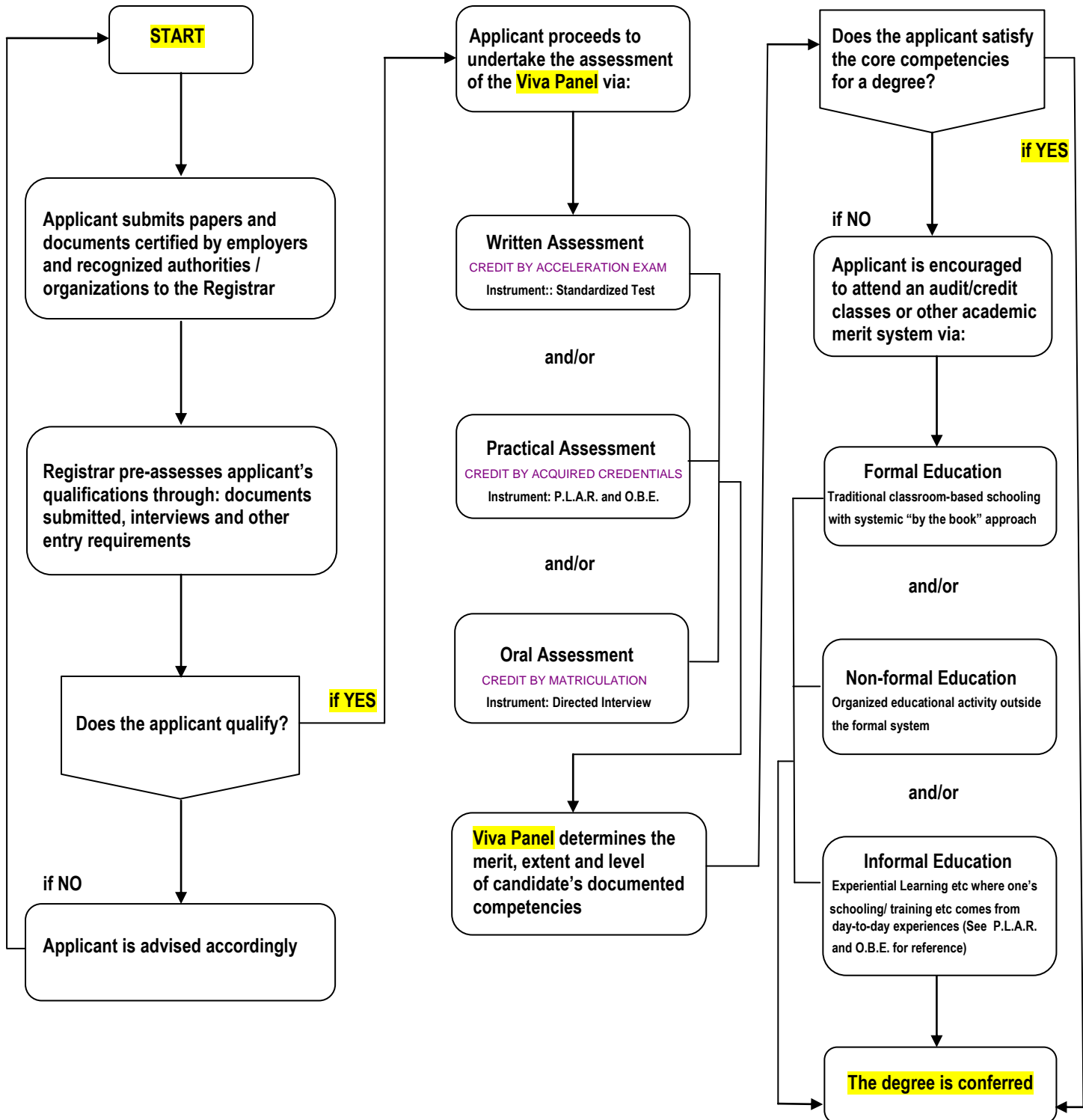


EXTENSION OFFICE
 St. Linus Online Institute
 C/O St. Paul College of Technology
 Brgy. Samput, Paniqui, Tartac—2307
 PHILIPPINES
 Telefax: (045) 9311033
 Website: www.stlinusuniversity.edu.tf

STEP 1: APPLICATION

STEP 2: ASSESSMENT

STEP 3: RESULT



Click → [Curricula](#) or [PLAR](#) for details.

NOTE: We give credits and merits to the acquired credentials of the student. This is the formal acknowledgement of learning acquired from previous schooling, work experiences, and the like based on St. Linus' Outcome-based Education (OBE) and Prior Learning and Assessment Recognition (PLAR) system. A degree, however, is awarded only if the student's credentials are equivalent to what would have been taught in a college level course and s/he has sufficient, verifiable and demonstrable academic knowledge and technical skills supporting his/her claim.